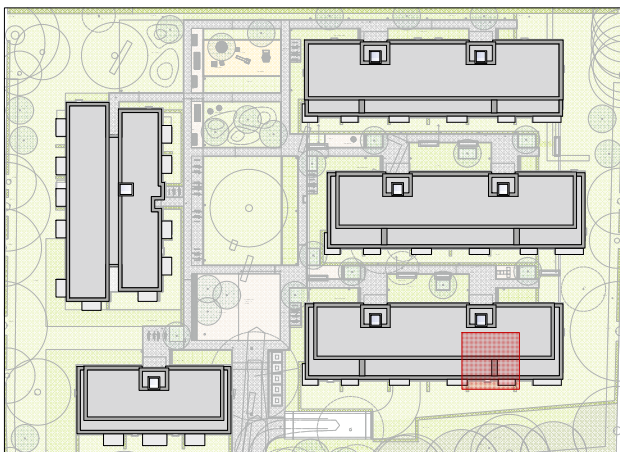
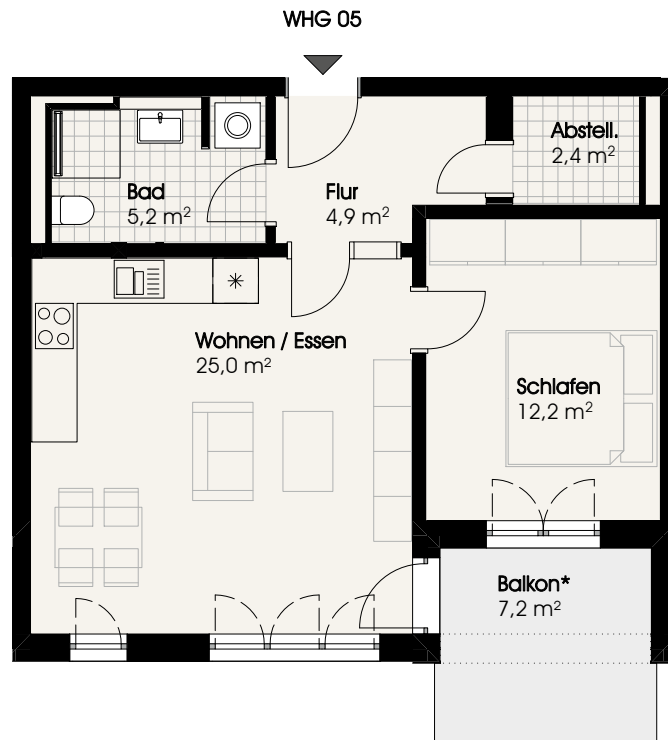


# BUUR.

NATÜRLICH LANGENHORN



## BUURREDDER 14b | WHG 05 | 1.OG

Wohnen / Essen	ca.	25,0 m <sup>2</sup>
Schlafen	ca.	12,2 m <sup>2</sup>
Bad	ca.	5,2 m <sup>2</sup>
Flur	ca.	4,9 m <sup>2</sup>
Abstellraum	ca.	2,4 m <sup>2</sup>
Balkon (*anrechenbar 50 %)	ca.	3,6 m <sup>2</sup>
<b>Gesamt</b>	<b>ca.</b>	<b>53,3 m<sup>2</sup></b>